

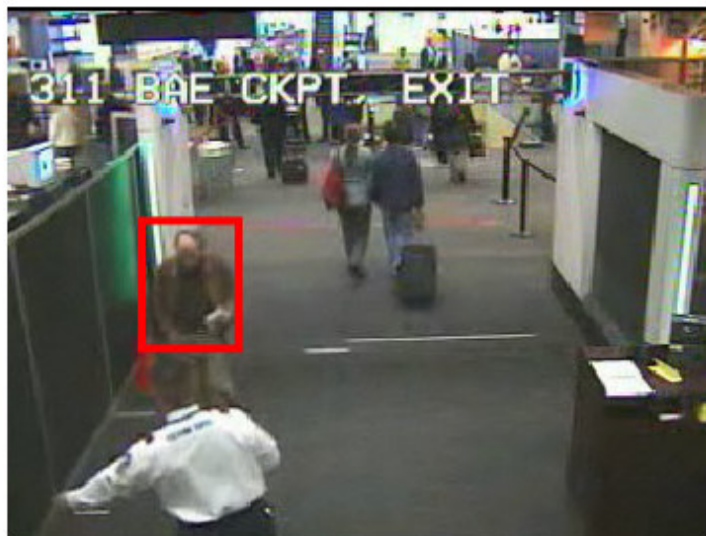
# SmartCatch™ | Exit Lane

## Technical Specification

Vidient SmartCatch is an accurate and effective solution for detecting loitering in sensitive areas. Using existing CCTV infrastructure, SmartCatch software monitors, identifies and tracks objects for security policy violations and enables quick response through real-time alerts and instant video replays. At the core of SmartCatch is a set of advanced video algorithms capable of performing complex behavioral analysis, tracking numerous objects and simultaneously identifying security threats in even the most complex environments. Exit lane is one of many available SmartCatch behaviors.

### DEFINITION

SmartCatch Exit Lane behavior detects humans and objects moving in a predefined direction. It is called "Exit Lane" because this behavior is generally used at an airport exit lane for detecting when a person goes the "wrong way" exiting an airport terminal. A security breach occurs when someone enters a secure area from an opening designed specifically for exiting, and no other barriers exist to prevent such movement from happening. The SmartCatch Exit Lane



behavior detects a violator when they cross a predefined line in the exit corridor. Any person or object that crosses the line from the wrong side will cause an event to be generated. SmartCatch include two types of line crossings: a warning line that generates an event when crossed for low severity violation information, and an Alert line that generates a high priority event, such as an Alarm.

### SPECIFICATIONS

#### □ General

- Type of use: indoor
- Input video processing format: CIF, MPEG4
- Video processing size: 320x240 (NTSC), 352x288 (PAL), or higher; High resolutions may require more processing capacity.
- Minimum video size to detect object: 3x3 pixels at 320x240
- Maximum range: 50 ft (15 m) from the alert line with standard lens\*
- Slowly varying illumination
- Unlimited objects in exit direction
- Crowded scenes are accepted

\* Normal human eye.

- *Robustness Filters*
  - Varying lighting conditions
  - Shadows cast by objects
  - Guard recognition filter
- *User Configurations*
  - Warning zone line
  - Alert zone line
  - Onsite alert response options including support for beacons, alarms, or other serial and dry contact switch devices
- *Software & Hardware*
  - SmartCatch Video Processing(VPU) Software & SmartCatch Server
  - Minimum hardware specifications: Intel Xeon 2.8GHz, 1Gb RAM, 80 GB HDD

**RECOMMENDED CAMERA POSITIONS**

